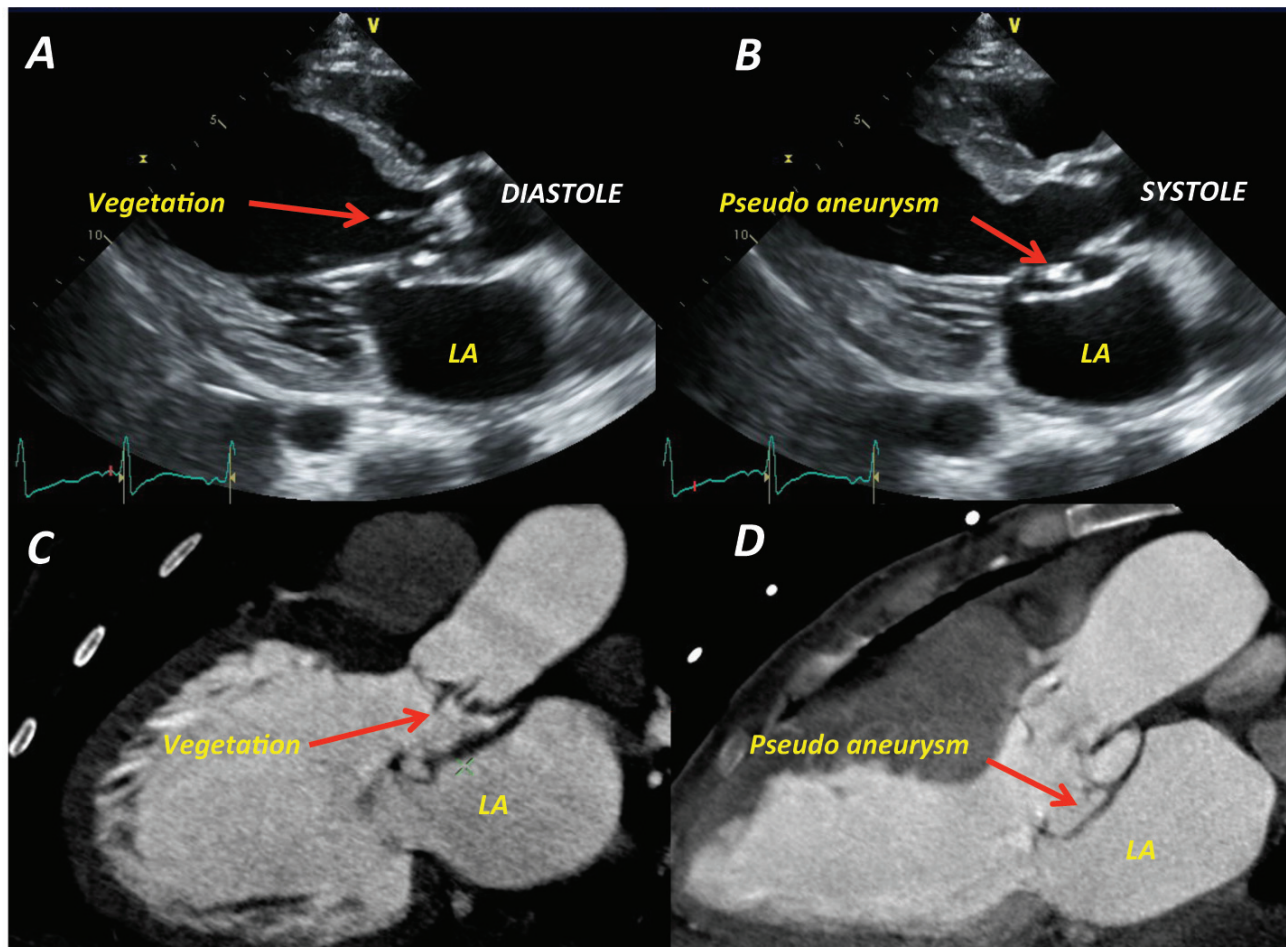


NATIVE VALVE PSEUDOANEURYSM

Dimitrios Maragiannis, M.D.; Mohamed El Beheary, M.D.; Su Min Chang, M.D.; Stephen H Little, M.D.
Houston Methodist DeBakey Heart & Vascular Center, Houston Methodist Hospital, Houston, Texas

A 42 year old woman with no history of cardiovascular disease presented with stroke and a recent history of fever. **PANEL A:** Transthoracic echocardiogram (TTE) reveals a linear mobile vegetation within the LV outflow tract during diastole. **PANEL B:** TTE demonstrates a pseudoaneurysm of the intervalvular fibrosa during systole. **PANEL C:** Contrast multidetector cardiac computed tomography (MDCT) displays the aortic valve vegetation during diastole. **PANEL D:** Contrast MDCT during systole reveals a large pseudoaneurysm of the intervalvular fibrosa without extension into the more distal aorta. Destruction of the tissue continuity between the anterior mitral leaflet and the aortic root (intervalvular fibrosa) is an uncommon presentation of native valve endocarditis.



LA: left atrium