

Methodist DeBakey Heart Center Expands CME Offerings

B E N C H T O B E D S I D E

SCIENCE

CLINICAL TRIALS

TREATMENT

The Heart Center is pleased to announce the launch of online accredited CME activities discussing ongoing research and clinical efforts. These activities are part of a growing series highlighting the Heart Center's bench-to-bedside approach to evidence-based medicine.

New Directions in the Treatment of Peripheral Arterial Disease

Alan B. Lumsden, MD; Christie Ballantyne, MD; Joel D. Morrisett, PhD; and Paul F. Bray, MD present key concepts and future directions in peripheral arterial disease (PAD), an emerging epidemic that is severely under diagnosed in the United States.

To access this activity, log on to www.methodisthealth.com/padj.

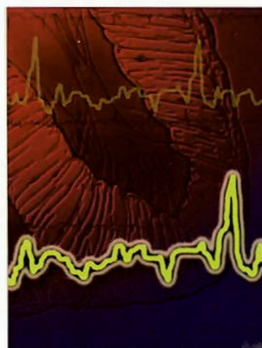
The Role of Inflammation in the Pathogenesis of Heart Failure

Christie Ballantyne, MD; Douglas Mann, MD; and Guillermo Torre-Amione, MD discuss immunological and molecular alterations that occur during heart failure, including the relevance of inflammation in disease progression.

To access this activity, log on to www.methodisthealth.com/chfg.

Upcoming Live CME at AHA Scientific Session

DIASTOLIC HEART FAILURE: *The Heart of the Matter*



Saturday, November 6, 2004
2:00 pm - 4:00 pm
Doubletree Hotel
International Ballroom
New Orleans, Louisiana

An expert panel will present information on current investigative theory, diagnosis and treatment of diastolic heart failure. The session will also introduce some of the new management therapies used by tertiary care heart failure centers to care for advanced, complex cases.

Faculty

William C. Little, MD
Wake Forest University School of Medicine
Douglas L. Mann, MD
Methodist DeBakey Heart Center,
Baylor College of Medicine
Miguel A. Quinones, MD
Methodist DeBakey Heart Center,
Baylor College of Medicine
Guillermo Torre-Amione, MD, PhD
Methodist DeBakey Heart Center,
Baylor College of Medicine

www.debakeyheartcenter.com/ahasymposium

Jointly Sponsored by Methodist DeBakey Heart Center and Baylor College of Medicine

New Academic Affiliation Formed

The Methodist Hospital recently announced the formation of a primary academic affiliation with Weill Cornell Medical College and New York Presbyterian Hospital. This 30-year agreement will draw on the strengths of all three internationally renowned institutions to enhance patient care, clinical and biomedical research, and medical education.

The alliance offers unique opportunities to foster new initiatives across the spectrum of academic medicine, including clinical trials, international medicine, national health care policy, outcomes research and graduate medical education. With 1,269 beds, The Methodist

Hospital is one of the largest acute care hospitals in the southwest, and one of the country's largest private non-for-profit hospitals. New York-Presbyterian Hospital, with 2,397 beds, is the largest hospital in the northeast, and the anchor of New York-Presbyterian Healthcare System. Weill Cornell Medical College is among the top ranked medical education, clinical and research centers in the United States with over \$245 million in NIH-funded research grants.

U.S. News & World Report

The Methodist Hospital has been named among the country's top hospitals for heart and heart surgery in *U.S. News*



& *World Report's* 2004 America's Best Hospitals issue. The hospital's Methodist DeBakey Heart Center currently is ranked 17th for its heart and heart surgery programs.

Methodist also is ranked among the country's top centers for neurology and neurosurgery; urology; ear, nose and throat; psychiatry; kidney disease; ophthalmology; gynecology; and orthopedics.

Ongoing Clinical Trials

The Methodist DeBakey Heart Center is dedicated to improving clinical outcomes through evidence-based medicine. Visit www.debakeyheartcenter.com to access information regarding ongoing clinical trials related to cardiovascular disease.

