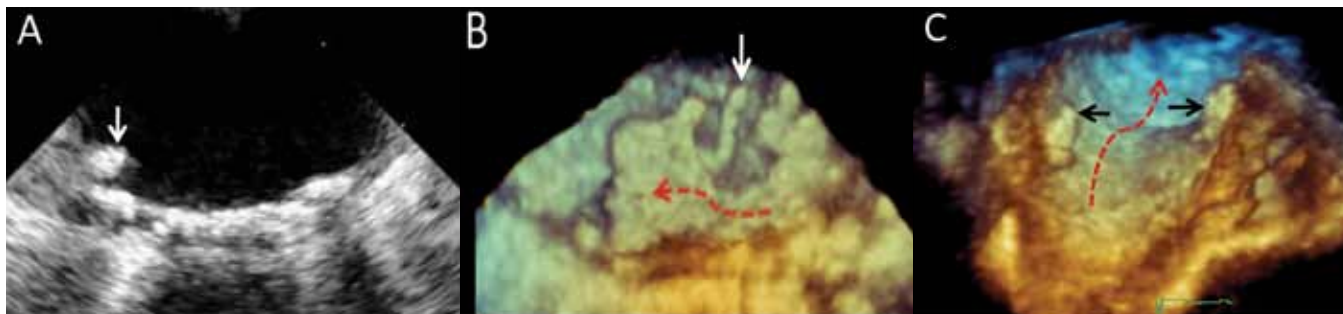


MUSEUM OF IMAGING



MUSEUM OF IMAGING Atherosclerotic plaque of the thoracic aorta. A 76 year old man suffered a stroke and was referred for a transesophageal echocardiogram. (A) Short-axis 2D images demonstrated aortic plaque with a discrete mobile element (white arrow) within the descending thoracic aorta. (B) Live 3D images, cropped to a transverse view, demonstrate a more severe atheroma complex. The same mobile element is shown as in A (white arrow). (C) Long-axis view of the aortic arch show two large plaques (black arrows) along opposing arterial walls. Red arrows indicate blood flow direction. No intra-cardiac source of emboli was identified.